

GYNDOKTOR

SPECIALLÆGE DR. MED. PERNILLE DANNESKIOLD LASSEN

CONE BIOPSY (CONIZATION)

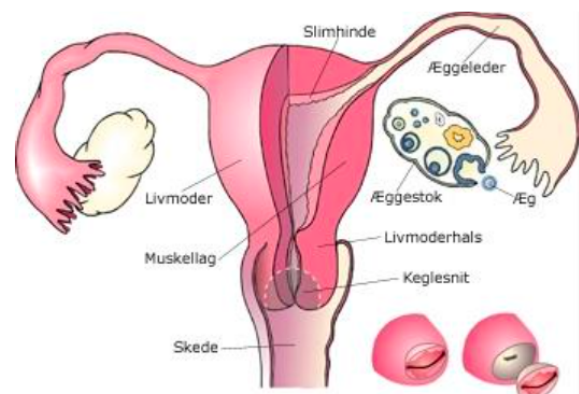
WHEN IS A CONE BIOPSY PERFORMED?

A cone biopsy is a small operation that removes a cone-shaped piece of tissue from your cervix. It is recommended when abnormal cells have been detected in cervical biopsies. It is important to emphasize that abnormal cells are NOT cancer. Nearly all women who have a cone biopsy performed are completely cured.

Abnormalities are most often seen in the cells lining the outer surface of the cervix and can be divided into light, moderate, severe and carcinoma in situ. Only severe abnormalities and carcinoma in situ are treated with a cone biopsy. Abnormalities can also be seen in the cells lining the inner canal of the cervix, although less common. They usually develop due to persistent infection with high-risk types of human papilloma virus (HPV). The virus infection as well as cellular abnormalities are in most cases without symptoms and are discovered by cervical screening (PAP-smear/HPV test).

THE PROCEDURE

It is recommended to take pain-relieving medication before you leave home (1 g of Panodil og 400 mg of Ibuprofen). You can eat and drink normally. You lie on a gynecological examination table with legs in stirrups. A speculum is gently inserted into the vagina to visualize the cervix. A thin needle is used to inject local anesthesia. You might feel a short sting or pressure, but the area becomes numb quickly.



After that, a loop-shaped electrical wire is used to remove the cone-shaped piece of tissue. This takes less than 15 seconds. Any bleeding is eventually stopped with cauterization (coagulation) of the wound surface. The entire procedure lasts about 15 minutes. The cone is sent to the pathologists where an assessment of the degree of cellular abnormalities as well as

GYNDOKTOR

SPECIALLÆGE DR. MED. PERNILLE DANNESKIOLD LASSEN

CONE BIOPSY (CONIZATION)

of the resection margins are made. Even if the resection margins are not clear, the subsequent cauterization will often remove any remaining abnormal cells. Thus, the follow-up examination will in all cases involve a PAP-smear and HPV-test after six months.

AFTER THE PROCEDURE

Light bleeding or brownish discharge is normal up to 2 weeks after the procedure. Some women get crampy pain like period pains. After a week you may experience a new bleeding episode when the scab loosens and falls off. The wound is completely healed after 4-6 months, where a new mucous membrane has covered the area where the cone was removed.

No formal sick leave is required. It is recommended to avoid heavy lifting and other psychical strain for one week after the procedure. You should also avoid sexual intercourse, bathtubs, swimming and the use of tampons for one months.

Please call the clinic or your GP if you experience heavy bleeding (larger than menstruation) or fever (more than 38 C).

Additional cauterization may in rare cases be necessary.

RESULT

The report from the pathologists is ready within 1-2 weeks, where you will receive a mail. In most cases, the recommended follow-up PAP-smear has already been scheduled the day of the procedure.

PRICE FOR PATIENTS WITHOUT AF REFERRAL FROM THEIR GP

.....335 euro

PAYMENT

You can pay with Mobile Pay or cash in the reception. Unfortunately, credit cards are not accepted. Foreign patients can transfer to IBAN account number DK 7690701633 002904 with beneficiary bank SWIFT code VRSPDK22. In case of bank transfer, payment should be received by the latest two days before the consultation. You will receive an invoice in the clinic.